



LET'S TALK DATA!

SAVANNAH CARRICO, MPH

PUBLIC HEALTH EPIDEMIOLOGIST

DURHAM COUNTY DEPARTMENT OF PUBLIC HEALTH

AUGUST 18, 2022

WHAT DOES IT MEAN WHEN I SAY

Over represented = there are more cases in one population than expected

Under represented = there are fewer cases in one population than expected

For example, 54% of Durham is white but only 37% of COVID cases are among white people. Therefore, COVID cases among white people are under represented.

CASES BY RACE/ETHNICITY JULY 1 - 29, 2022

- Hispanic or LatinX individuals are over-represented in COVID-19 cases
 - 20% of cases are among Hispanic or LatinX residents, while 14% of Durham County residents identify as Hispanic or Latin
- Black or African American individuals are proportionally represented in COVID-19 cases
 - 37% of cases are among Black or African American individuals, while 37% of Durham County residents identify as Black or African American
- White individuals are under-represented in COVID-19 cases
 - 41% of cases are among white individuals, while they make up 54% of Durham County's population

HOW DO WE KEEP THIS SIMPLE?

- Most of the time, we are comparing two data sets
 - Usually, we compare one data set from one point in time to another data set at a different point in time. For example, we can compare last week's data to this week's data
 - We want to look for increases or decreases
- You have to keep data metrics (ways to measure data) the same between both data sets
 - You can't compare apples to oranges

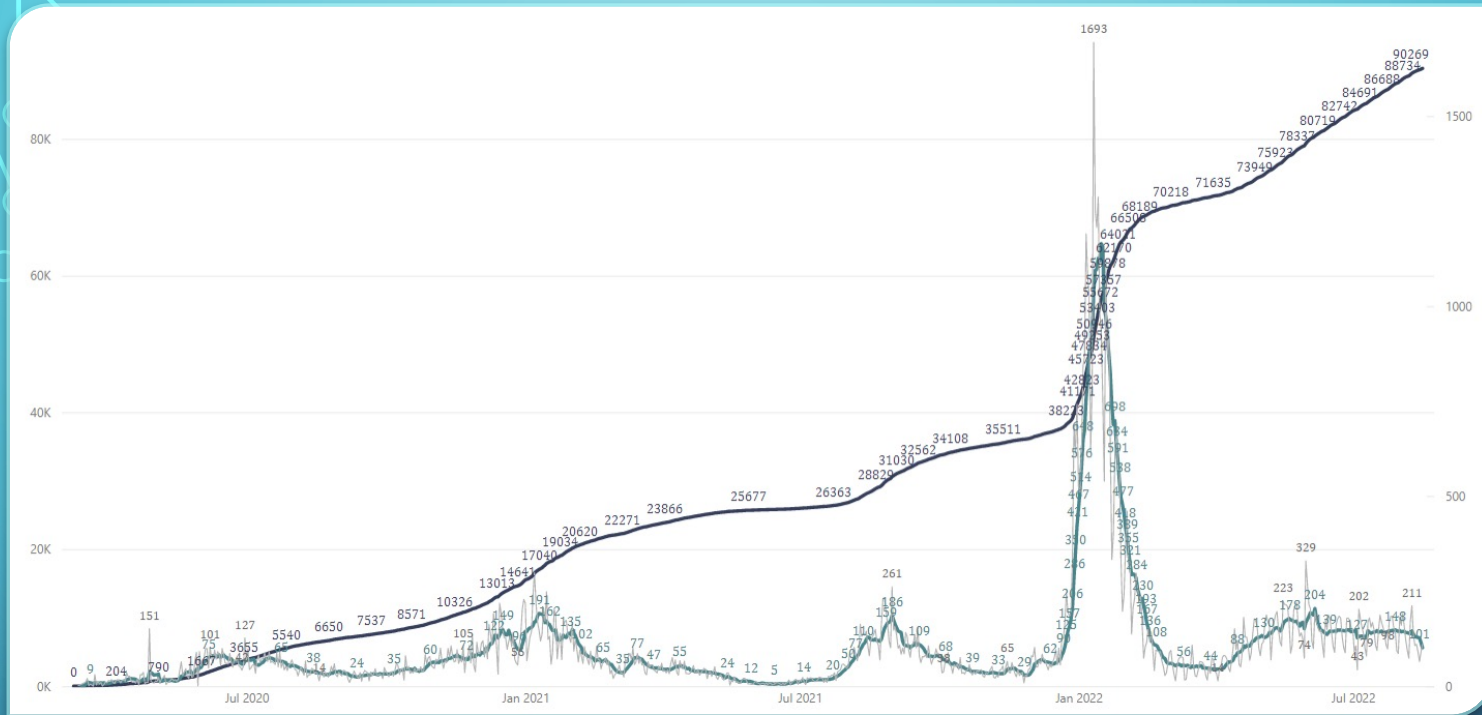
WHAT ARE VARIANTS?

- Variants of disease are all part of the same virus, just slightly different
- Think about cars:
 - Think of Toyota as Coronavirus
 - Think of different models of Toyota cars as different variants
 - Toyota: Corolla, Camry, Tacoma
 - Coronavirus: Alpha, Delta, Omicron



VACCINES IN DURHAM COUNTY

- 599,876 vaccine doses administered since January 1, 2021
- 77% of Asian residents are fully vaccinated
- 51% of Black or African American residents are fully vaccinated
- 66% of Hispanic or LatinX residents are fully vaccinated
- 62% of white residents are fully vaccinated



Durham County, North Carolina

[State Health Department](#) 

COVID-19 Community Level

● High

Recommended actions based on current level

Wear a mask indoors in public and on [public transportation](#). Stay [up to date](#) with COVID-19 vaccines. [Get tested](#) if you have symptoms. If you are at [high risk for severe illness](#), consider taking [additional precautions](#).

Weekly Metrics Used to Determine the COVID-19 Community Level

Case Rate per 100,000 population	305.77
New COVID-19 admissions per 100,000 population	17.9
% Staffed inpatient beds in use by patients with confirmed COVID-19	7.4%

COVID TRANSMISSION RATE IN DURHAM COUNTY

For every 100,000 people in Durham County, 305.77 of them have COVID. This is a HIGH transmission rate.

Hospitalization Data in Durham County Since January 1st 2021

Return to Home Page

Daily Hospital Admissions - 7 Day Moving Average

New Admissions (last 7 Days)

52

Rate of New Admissions per 100 beds (last 7 Days)

(Bla...

Rate of New Admissions per 100k people (last 7 days)

16.18



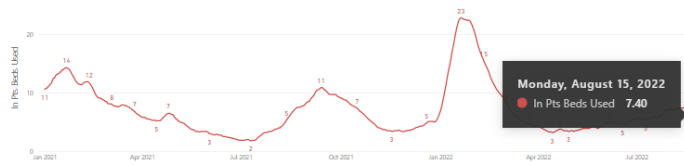
Daily % Beds Used

% Beds Used (last 7 Days)

7.4

% Change (last 7 days)

0



Daily % ICU Beds Used

% ICU Beds Used (last 7 Days)

10.8

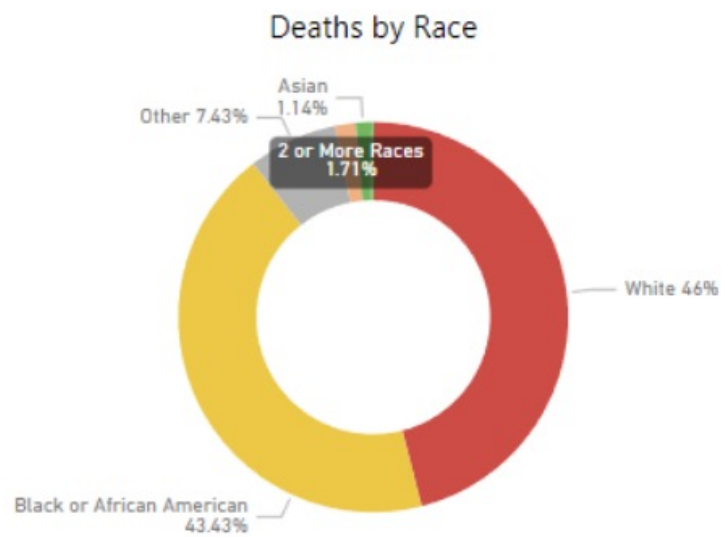
% Change (last 7 days)

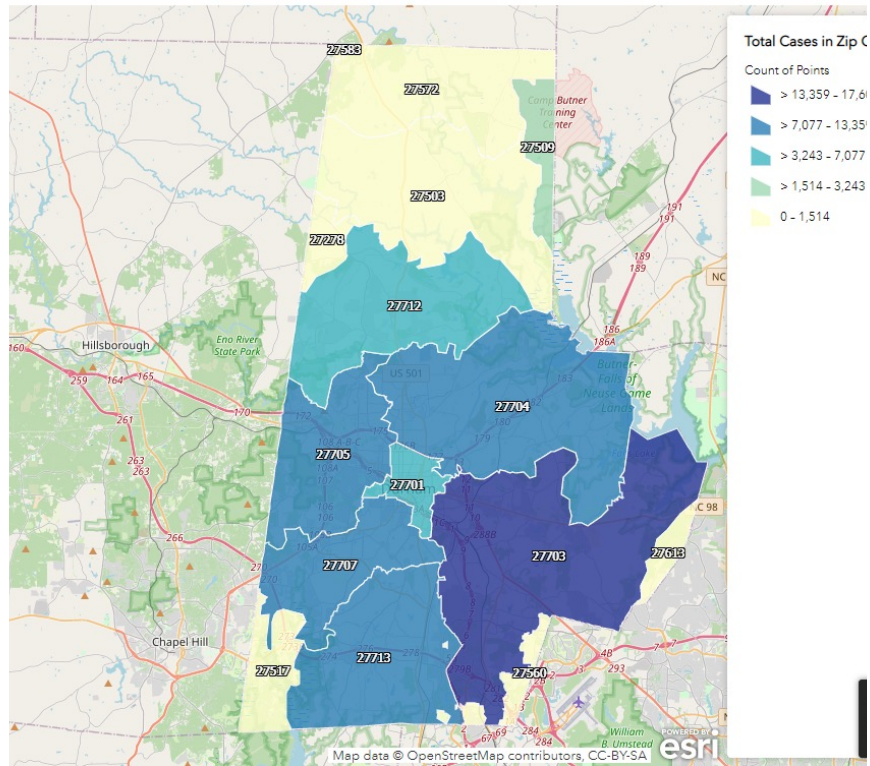
0.4



HOSPITALIZATIONS

347 COVID-19 DEATHS IN DURHAM COUNTY





NORTH
DURHAM HAS
FEWER CASES
THAN
SOUTHEASTERN
DURHAM



QUESTIONS???

Savannah Carrico

scarrico@dconc.gov

919-560-7832

THANK YOU!